

User Guide Sodexo Lunch Pass card

The card will allow contactless and online payments, and you can use it to make secure purchases down to the penny within the Sodexo network!



THE BENEFITS OF THE SODEXO LUNCH PASS CARD

1.



EASY TO USE

The electronic lunch vouchers will be uploaded on your card after each order placed by your employer and the oldest e-vouchers will be automatically used first.

2.



DEDICATED MOBILE APPLICATION AND WEB PORTAL

With the App **MySodexo Luxembourg** and the [web portal](#) you can activate and manage your card, follow your balance and transaction history and consult our acceptance network.

3.



A SECURE SOLUTION

Like an ordinary bank card, the Sodexo Lunch Pass card operates with a PIN code and can also be used for contactless payment. Online payments are also secure via CVV. In the event of loss or theft, the card can very easily be blocked and replaced.

4.



PAY WITH YOUR MOBILE

With **Apple Pay** and **Sodexo Pay**, you can pay directly with your Android smartphone.



One app.
All your Sodexo services.

mysodexo

HOW TO ACTIVATE YOUR SODEXO LUNCH PASS CARD?

1.



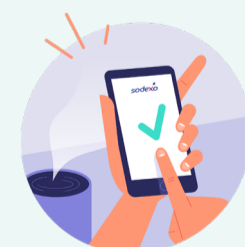
Take your Sodexo Lunch Pass card (you will find the **CARD ID** at the back of your card) and your **SODEXO ID** (you can find it on your PIN mailer). Both will be delivered separately for security reasons.

2.



Download the mobile application **MySodexo Luxembourg** on [Apple Store](#) and [Google Play Store](#). You can also log in with the [Web portal](#).

3.



Follow our step-by-step [tutorial video](#) to create your account and activate your card.

Our Team at your service

We wish you a pleasant experience with your Sodexo Lunch Pass card.

consumers.lu@sodexo.com
(+352) 26 109 420

From **Monday to Friday**
from **8am to noon** and from
1pm to 5pm.



DOWNLOAD THE MOBILE APP
MYSODEXO LUXEMBOURG

sodexo